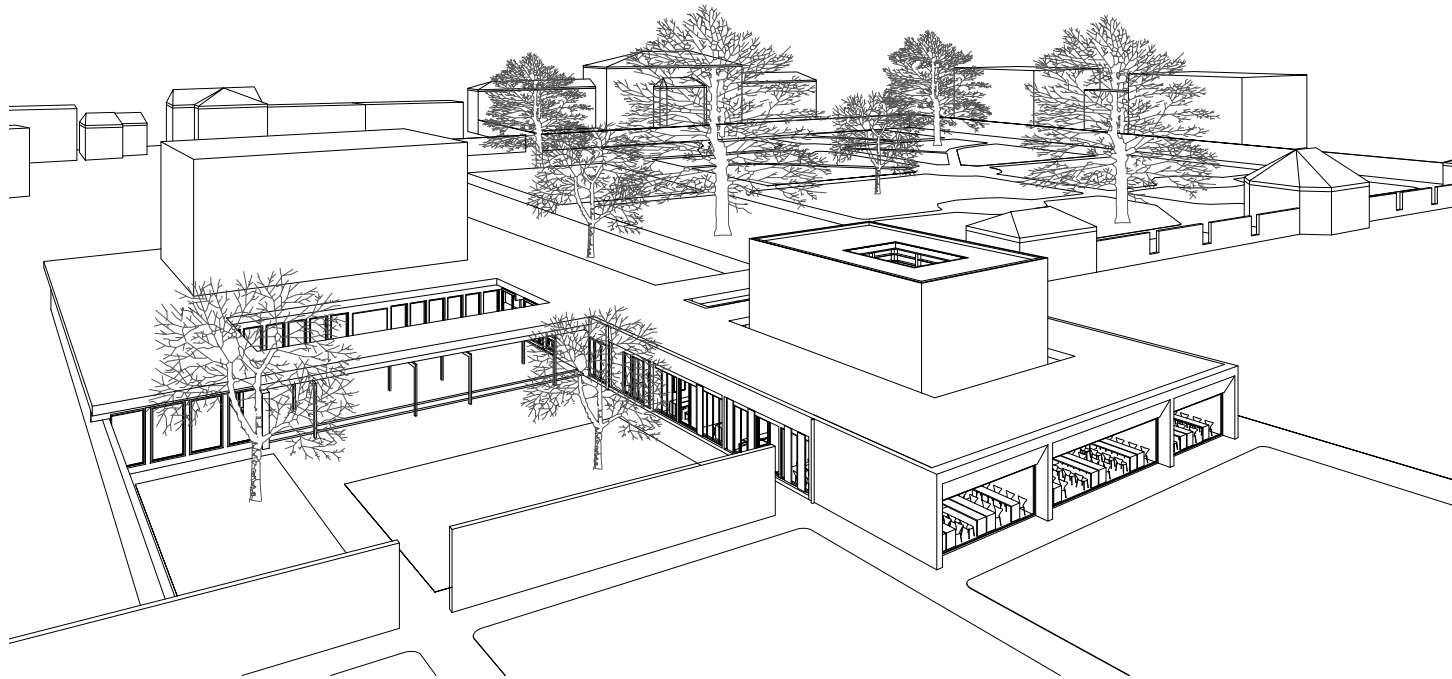


concentration & delight

Semesterentwurf im Erasmus-Semester 2007
University of Strathclyde in Glasgow, Christopher Platt



"It's important for me that there should be real quality at that point where people actually come face to face with architecture."
Karljosef Schattner 1994

Eichstaett in southern Germany has long been an architectural pilgrimage destination for the study of Karljosef Schattner's work. Located in

this tiny Baroque town, a lifetime's engagement with the spatial, tectonic and above all detail aspects of the existing architecture has created a unique collection of immaculately-crafted contemporary buildings all within walking distance of each other.

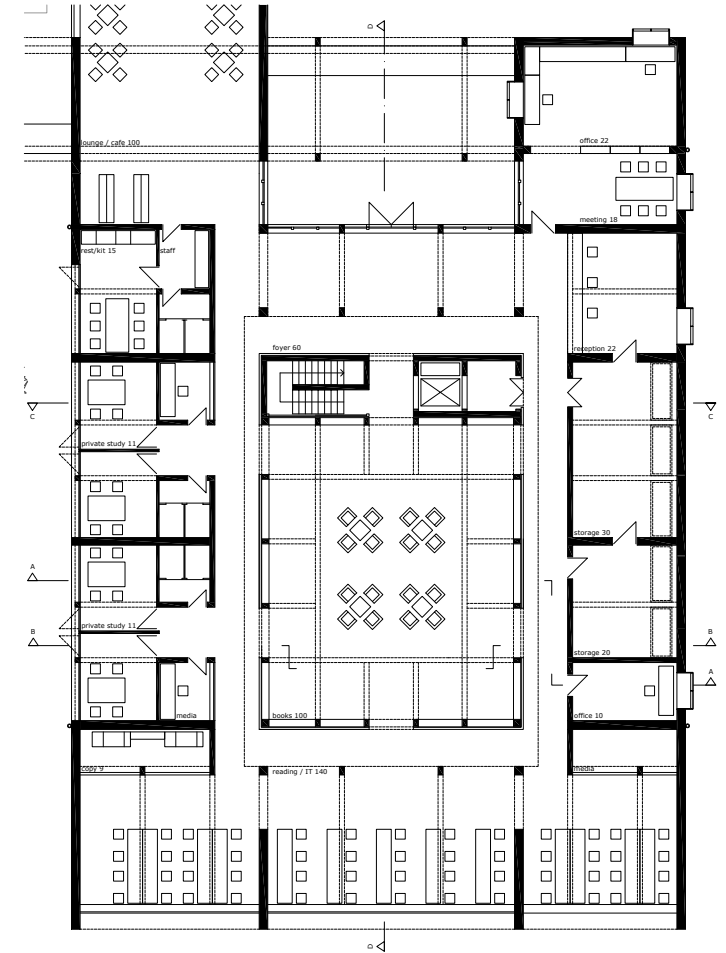
We will use the lessons of and issues thrown up by Schattner's work as leitmotifs for our work.

We will visit Eichstaett and Schattner, visit and measure some of his work to understand at first hand the specific issues associated with placing a contemporary intervention in a setting of the highest historic architectural quality. The project will be for a small university library.



The chosen site - It's the area southwest of Eichstätt's historic centre. At the former Hofgarten and with view to the riverside the new library shall be located next to the existing Seminar Library built by Karl-Josef Schattner in 1963-65. Besides the library there are a couple of other university-buildings around the Hofgarten, as for example the main complex containing lecture theaters and seminar rooms, the Mensa

or the faculty of journalism. So the whole area can be seen as a campus. The new library connects to the Schattner building, offering the opportunity to create a union of two faculty-libraries of similar interests, like for example mathematics and physics or architecture and design. The form is very similar to the existing building, like a little brother but in a new interpretation. It's a light



cube for the books surrounded by a solid ring of rooms. It provides a big foyer with a lounge area leading to the small foyer of the Schattner building - space for exhibitions. The rooms facing the garden are for private study and group work. Staff rooms and storage are located on the eastern side of the building. The big reading area in the front gives a wide view over the meadows and the river.



The cube is a steel construction with a skin of polycarbonate. Stored in the construction, the books seem to be a part of it. The translucent skin allows dimly shadows to shine through. The polycarbonate construction is built as double layer with white nano gel filling to protect the books and get diffuse daylight. In the evening the light is visible from the riverside.

I imagine the atmosphere in the cube being cool and bright whereas the surrounding rooms get the warmth of the timber floor and the nature flowing in through the big windows. Though, the pure concrete construction creates a quiet environment for concentration and delight.

